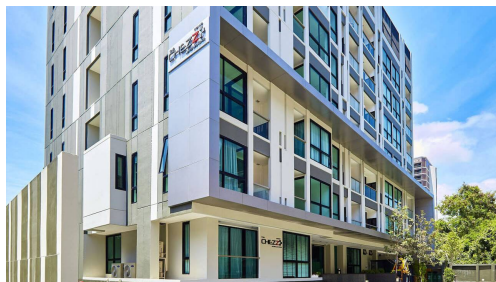


The Chezz



Seller Info

Имя:	MyThai Agent
Имя:	MyThai
Фамилия:	Agent
Название компании:	MyThai Property
Тип объявления:	Покупка или продажа
Мобильный:	
Телефон:	+1 (415) 800-2828
Веб-сайт:	http://mythai.property
Страна:	Thailand
Почтовый индекс:	55444
Адрес:	Landao
Обо мне:	I am the official MyThai Property website agent, feel free to contact me at any time!

Listing details

Общее

Название:	The Chezz
Недвижимость для:	Продажи
Цена:	฿ 3,990,000.00
Спальни:	2
Ванные комнаты:	2
Площадь:	62 m2 ft
Опубликовано :	17.11.2020

План оплаты

Сумма залога:	฿ 100,000.00
Contract Deposit:	N/A
Взносы:	Недоступно

Место нахождения

Город:	Паттайя
Район:	Central Pattaya

ДОПОЛНИТЕЛЬНАЯ ИНФОРМАЦИЯ

E-mail :	info@findthaiproperty.com
Mobile (import):	+66 (0) 800 844 727

Описание:

Newly Redecorated 2 Bedroom 2 Bathroom Apartment Available for Sale. Fully Furnished including New Large Sofa, Washing Machine, Microwave, Fridge / Freezer, TV, Built In Furniture. In very Heart of Central Pattaya. Located on the top 7th Floor - Corner Unit. Two Balconies. Despite the many attractions of the different parts of Pattaya, many buyers still prefer to be right in the centre of the... View more Newly Redecorated 2 Bedroom 2 Bathroom Apartment Available for Sale. Fully Furnished including New Large Sofa, Washing Machine, Microwave, Fridge / Freezer, TV, Built In Furniture. In very Heart of Central Pattaya. Located on the top 7th Floor - Corner Unit. Two Balconies. Despite the many attractions of the different parts of Pattaya, many buyers still prefer to be right in the centre of the city, within walking distance of all of the shops and entertainment options that Central Pattaya offers.

For anyone wanting the convenience of city centre living, The Chezz is currently the most affordable option available.

Located immediately opposite the very popular Apus Condominium development, located just a stone's throw from the vast Big C hypermarket just off Pattaya Klang, The Chezz offers all of the facilities that you can expect to find at developments several times its price, including two pools – one on the ground level and an infinity pool upon the roof from which there are stunning views across Pattaya City to the sea beyond.

All units at The Chezz are supplied on a fully furnished basis – providing everything you need to move in and start living straight away including all electrical goods. The showroom for the project which is already located on the site really is exquisitely created and, for anyone visiting Pattaya who wants to see the projects before they buy, it really is a must-see.

As well as offering great value for those looking for a holiday home right in the heart of Pattaya, The Chezz is also a very attractive investment for anyone looking at getting the best possible rental incomes. Property in this area is always very popular with

rental clients because of its convenient location – there is a waiting list for apartments at Apus next door – so investors here can expect incredibly high rental yields – with 15% net yield being easily achievable.

The Chezz is a small and intimate development containing just 154 apartments. The development was officially launched on 28 August 2012 and, within just a few weeks, over 100 units here were sold already. View less